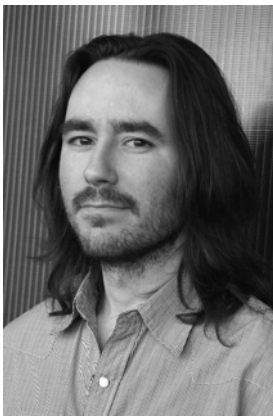


VERSION2 PARTNERS WITH VFX-ANIMATION COMPANY SPECIAL BRANCH

New York-based editorial and VFX/motion design shop **Version2** announces its partnership with CG animation and VFX shop, **Special Branch**, forming **Special Branch@V2 (SB@V2)**. The partnership expands V2's current presence, ability, and scope allowing them to deliver a wider range of services and talent depth to its clients. Special Branch is run by Partners/Artists Fran Roberts and Ed Manning. The SB@V2 deal provides an additional dimension to the growing resources available at the VFX/motion design division of V2. Elaborating on the new relationship, V2's Head of Production Frank Devlin notes, "Having worked directly with Ed Manning, as a freelancer and then later when he started Special Branch, I was always impressed with the photoreal quality of his work. He achieves the highest production value on every project. Special Branch is a great compliment to the V2 companies and gives us the CG production support to compete in high end VFX projects."



Fran Roberts is a veteran VFX Supervisor/Artist and Animation Director, spending several years at Blue Sky Studios where he was instrumental in completing the feature film, *Ice Age*. Following Blue Sky, Fran spent several years freelancing on campaigns for Nike, Toyota, AT&T, Empire Blue Cross/Blue Shield, and Lenscrafters to name a few before launching Special Branch in 2005. Prior to Special Branch, VFX Supervisor/Artist/Animation Director Ed Manning worked for companies such as R/GA, Riot, Charlex, Click 3X, Black Logic, Blink, Liquid Light, UV/Phactory, Spontaneous, Trollback, and Imaginary Forces. Manning has been part of dozens of award-winning spot campaigns, music videos, game cinematics, and feature films such as *Twilight Zone*, *Dreamscape*, *Star Trek IV*, *Moonwalker*, *The Abyss*, *Back to the Future II* and *Total Recall*.



About Version2:

The Version2 group includes editorial and VFX/motion design divisions working collaboratively and independently in the commercial, film and broadcast arenas. The editorial roster is comprised of Owner Vito DeSario, Tina Mintus, Micah Scarpelli, Rick Waller, Jane Keller and Mark Thomas. The VFX/motion design division is headed by Creative Director Kieran Walsh, Art Director/Flame Artist Nick Schlumpf, Designers/Animators Craig Davis, Michael McKenna and online editor Tim Farrell. Kathy Misrock is Head of Business Development and Sales, Frank Devlin is Head of Production.

About Special Branch:

Launched in 2004 by VFX Supervisor Ed Manning and Animation Director Fran Roberts, Special Branch focuses on high-end CG animation and VFX for the advertising community. True to the name, Special Branch has developed a reputation as an elite production unit, combining deep creative insight with technical wizardry.

Since its inception, Special Branch has taken on a variety of extremely challenging projects, ranging from uncompromisingly photoreal *CG* tabletop product demos to complete spot campaigns. In addition to its *CG* production core competency, Special Branch offers pre-production consultation and on-set VFX supervision. Special Branch looks to leverage the experience of its principals to continue its expansion into the related fields of motion graphics, design and architectural visualization.



For additional information, please contact: xtrainfo@trustcollective.com